

Why should you take notice of what Council is asking?

There is no argument that skateboards, roller blades and roller skates provide many people with a challenge, fun and excitement.

These can, however, cause damage to paved surfaces and can be a nuisance to pedestrians.

The Masterton District Council and the community have spent a lot of time and money upgrading the main shopping centre. We need to protect this area for everyone to enjoy.

Pedestrians have experienced situations where they have felt unsafe through skateboarders and roller bladers approaching them on the footpath.

The Council has decided to prohibit the use of skateboards and roller blades in the areas shown on the map in this pamphlet.

People caught offending will have their skateboard or roller blades seized and a fine will be imposed (see over).

The skatepark is a great facility — please use this and remember to wear your safety gear.

The Masterton Skate Park is located at Queen Elizabeth Park in Dixon Street.



Masterton District Council
Informing the Community

Masterton District Council
PO Box 444
MASTERTON 5840

Phone: (06) 370-6300

Fax: (06) 378 8400
E-mail: mdc@mstn.govt.nz
www.mstn.govt.nz



MASTERTON
District Council



**SKATEBOARDS,
ROLLER SKATES
OR SIMILAR
DEVICES
Where You
Can Use Them**

There are areas where you are not permitted to use Skateboards, roller skates or similar devices.

PROHIBITED AREAS

Central Business District



Kuripuni



The Council Bylaw explains the following:

A “*Prohibited Area*” means those streets, footpaths, and public places defined in the maps where you are not allowed to go.

The Equipment includes

*Skateboards
Roller Skates
In Line Skates
Roller Blades
Scooters
etc*

These maps show the shaded places where the use of skateboards, roller skates and similar devices are NOT PERMITTED

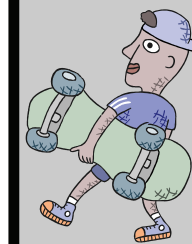
What the By-law says:

No person shall ride or use a skateboard, roller skates, or similar device in a prohibited area.

Outside the prohibited area, no person shall ride a skateboard, roller skates, or similar device without due care of any property or other people on the footpath.

What happens if you break the By-law?

Every person who commits an offence against the bylaw is liable to have the skateboard, roller skates or similar device impounded by the police or authorised Council officers.



DON'T LET THIS HAPPEN!

1st Offence: Impounded equipment 7 days. **2nd Offence:** Fine & impounded equipment 7 days. **3rd and/following offence:** Increased fine & impounded equipment 7 days.